

# Recent Trends in Alcohol and Other Drug Use in Connecticut

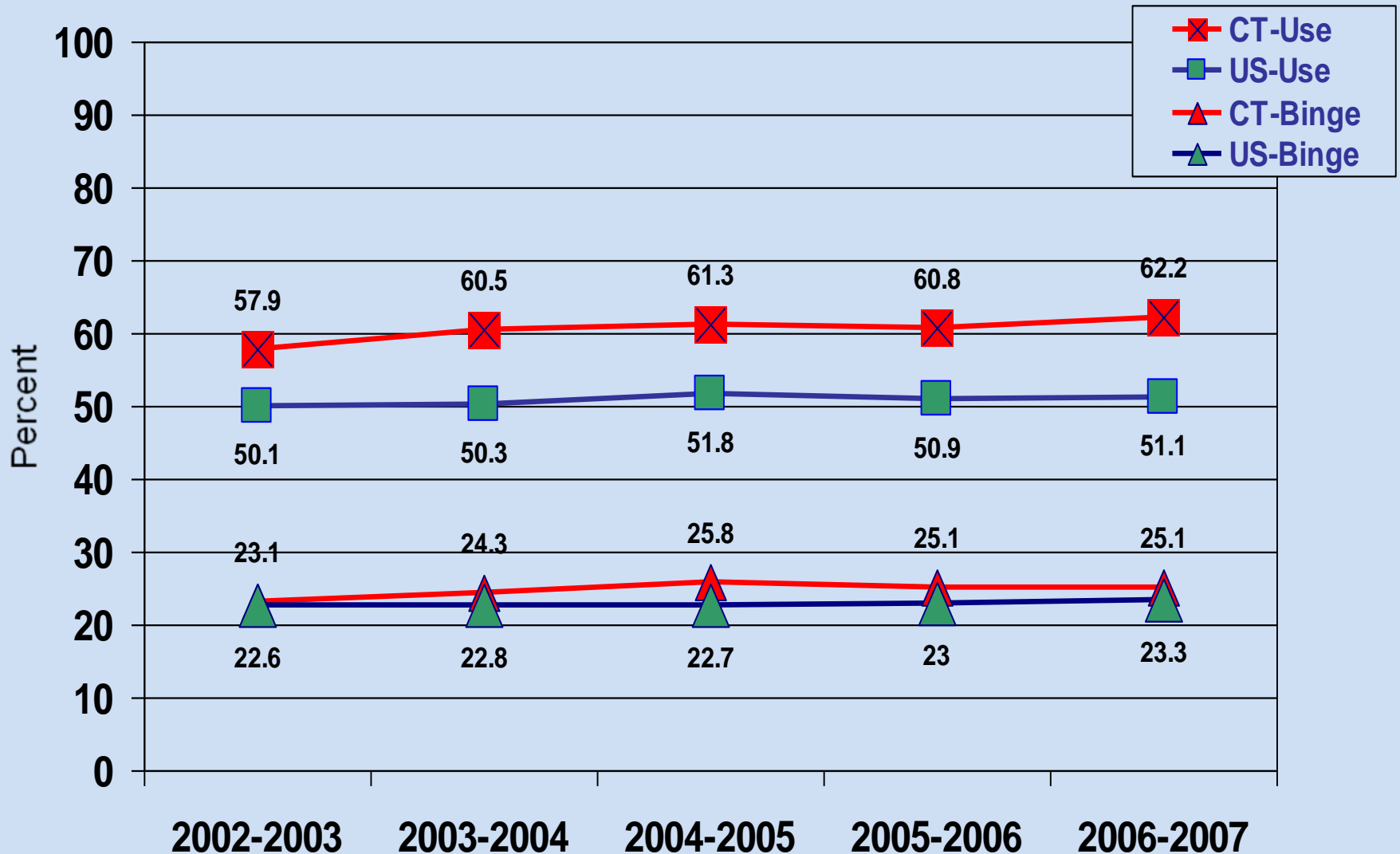
Jane A. Ungemack, Dr.P.H.  
University of Connecticut Health Center

Presentation to the  
State Epidemiological Workgroup  
Strategic Prevention Framework – State Incentive Grant (SPF-SIG)  
June 18, 2009  
Middletown, CT

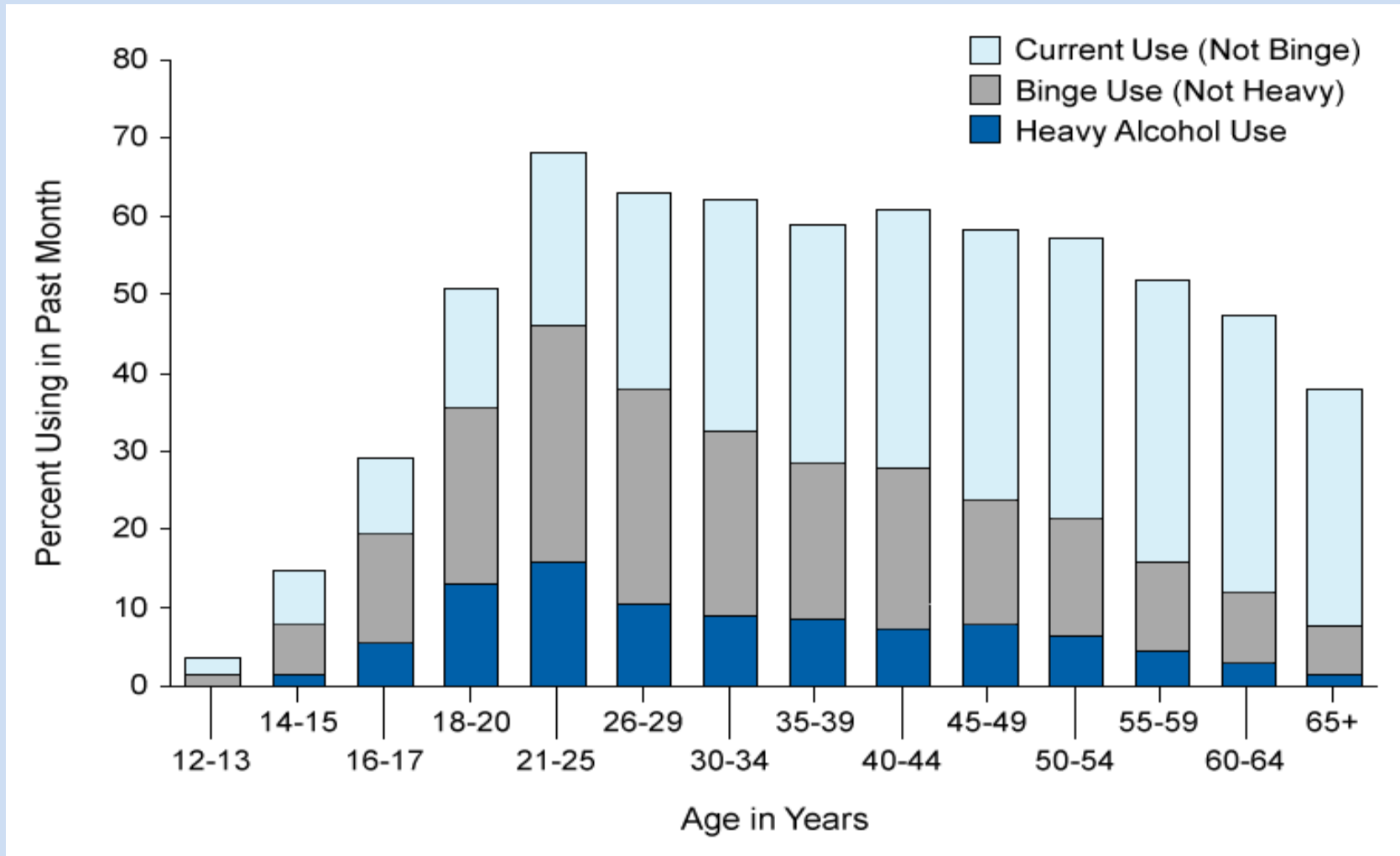
# SPF-SIG Priority Problem Substances

- Alcohol
  - Underage Drinking
- Tobacco
- Marijuana
- Heroin
- Cocaine
- Prescription Drug Misuse

# Trends in Past 30 Day Alcohol Use and Binge Use Ages 12 or Older: Connecticut vs. U.S., NSDUH, 2002 - 2007

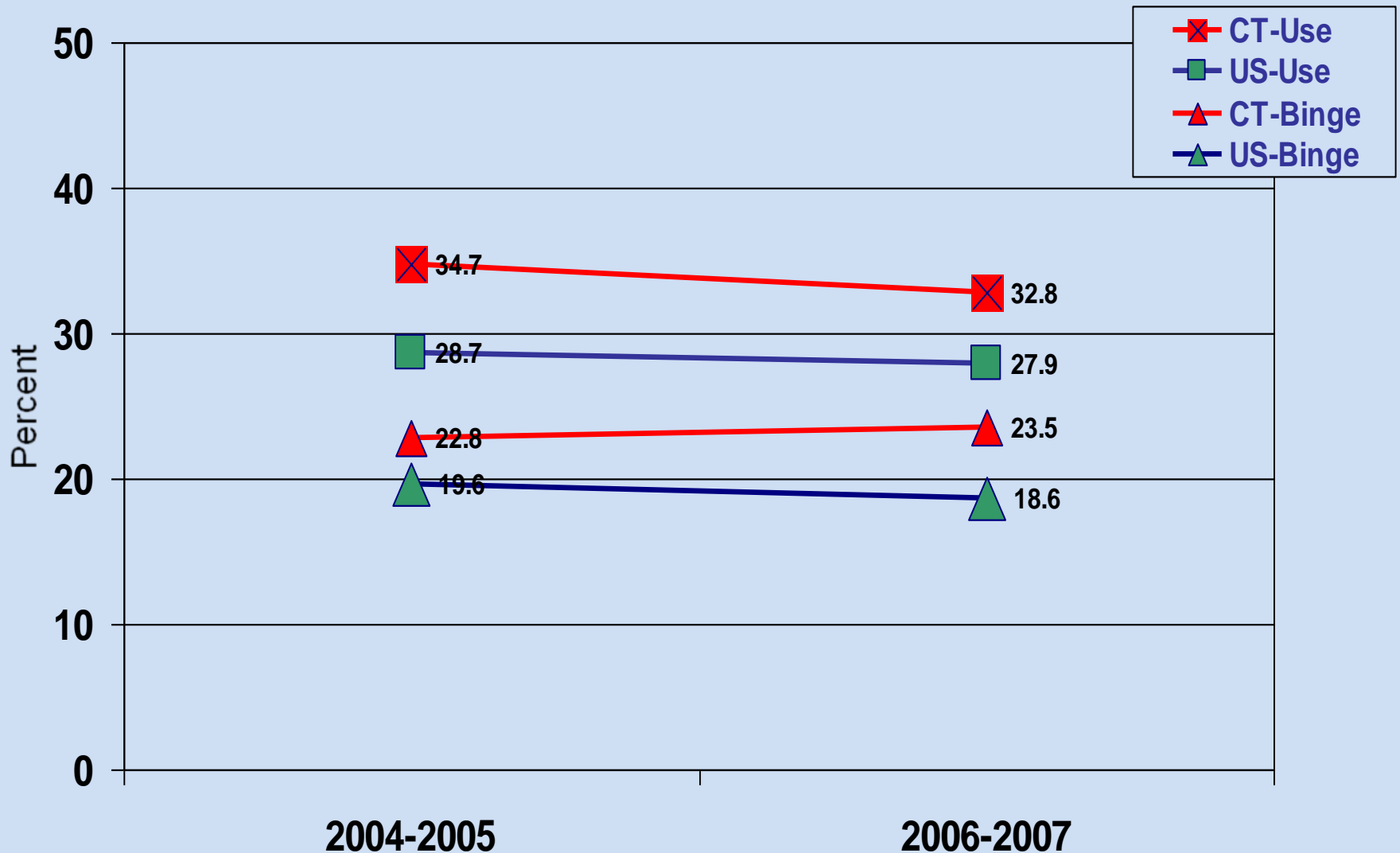


# Current, Binge, and Heavy Alcohol Use among Persons Aged 12 or Older, by Age: United States, NSDUH, 2007

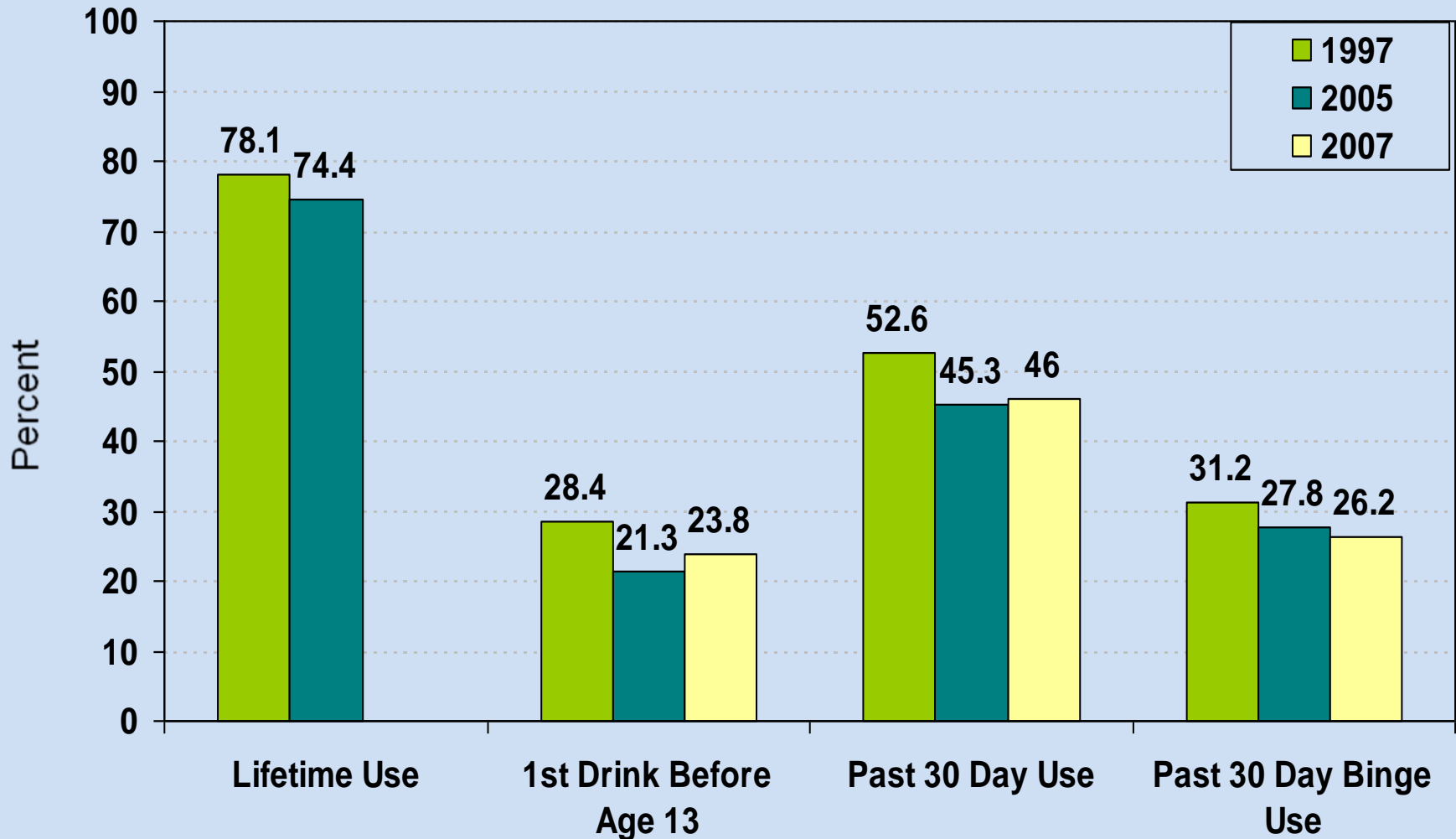


Heavy use - Five or more drinks on the same occasion on at least 5 different days in the past 30 days

# Trends in Past 30 Day Alcohol Use and Binge Use among Persons Aged 12 to 20: Connecticut vs. U.S., NSDUH, 2004 - 2007

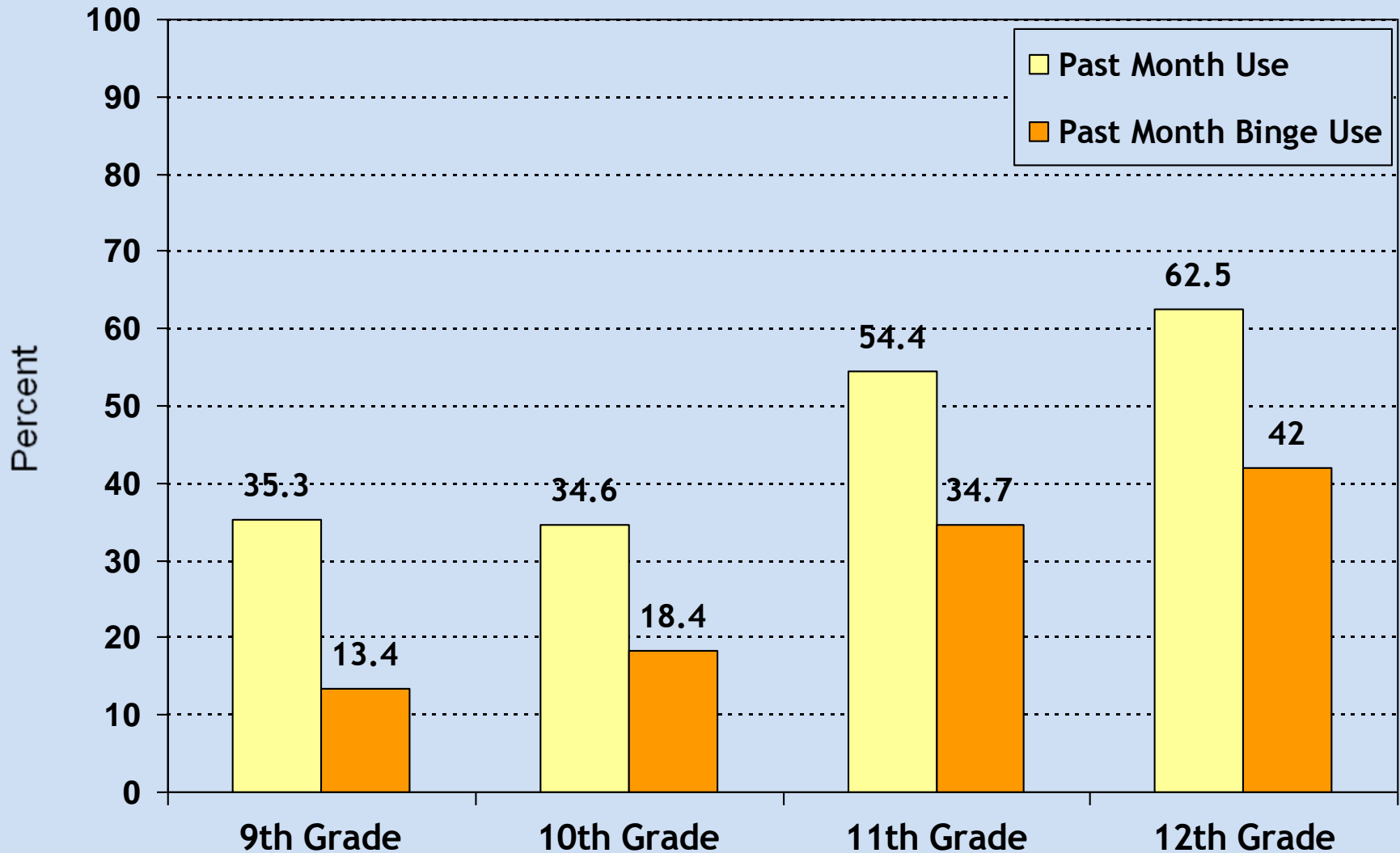


# Trends in Alcohol Use among Connecticut High School Students: YRBSS, 1997, 2005 and 2007

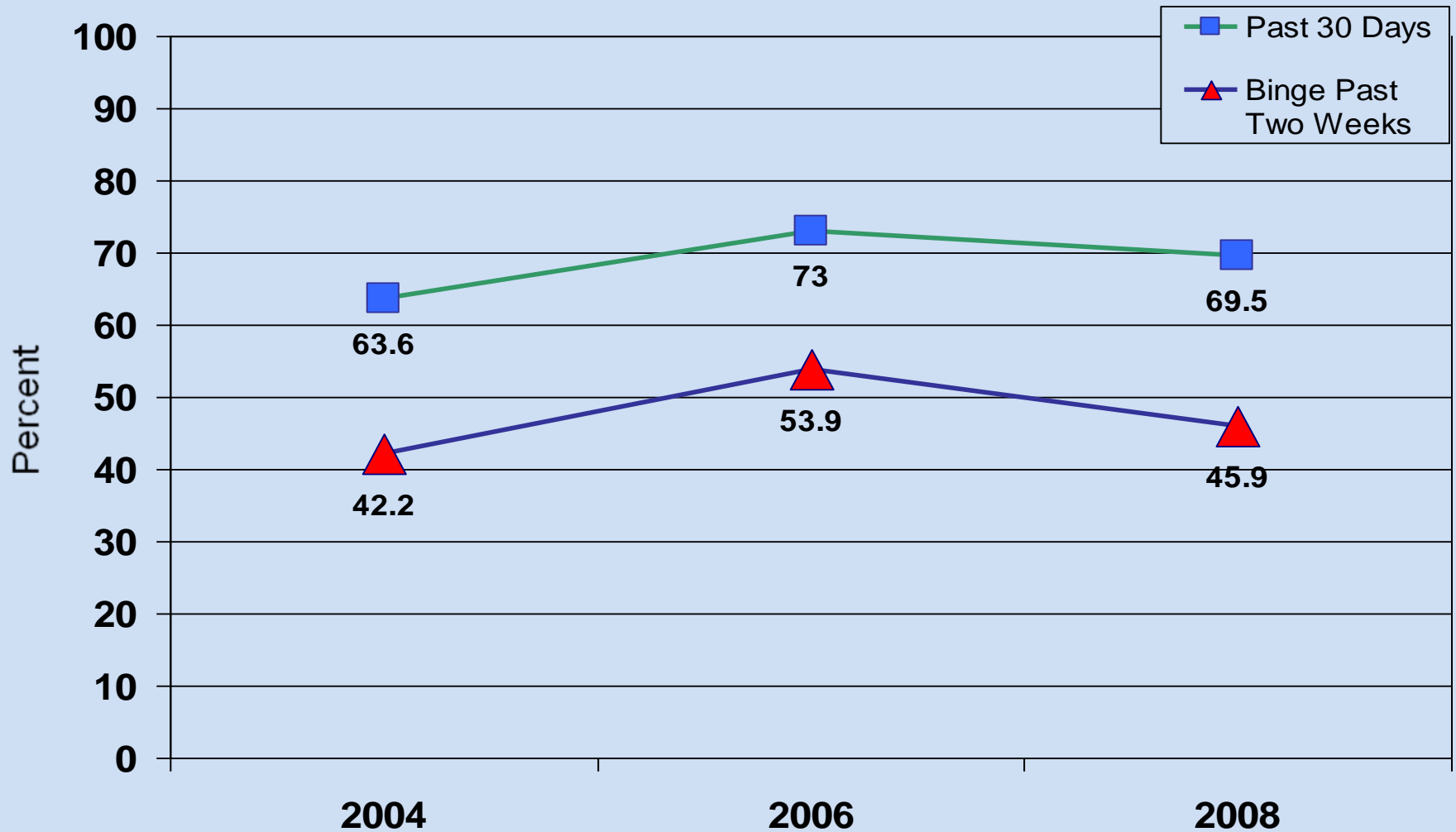


\*2007 CT Lifetime Use Not Available

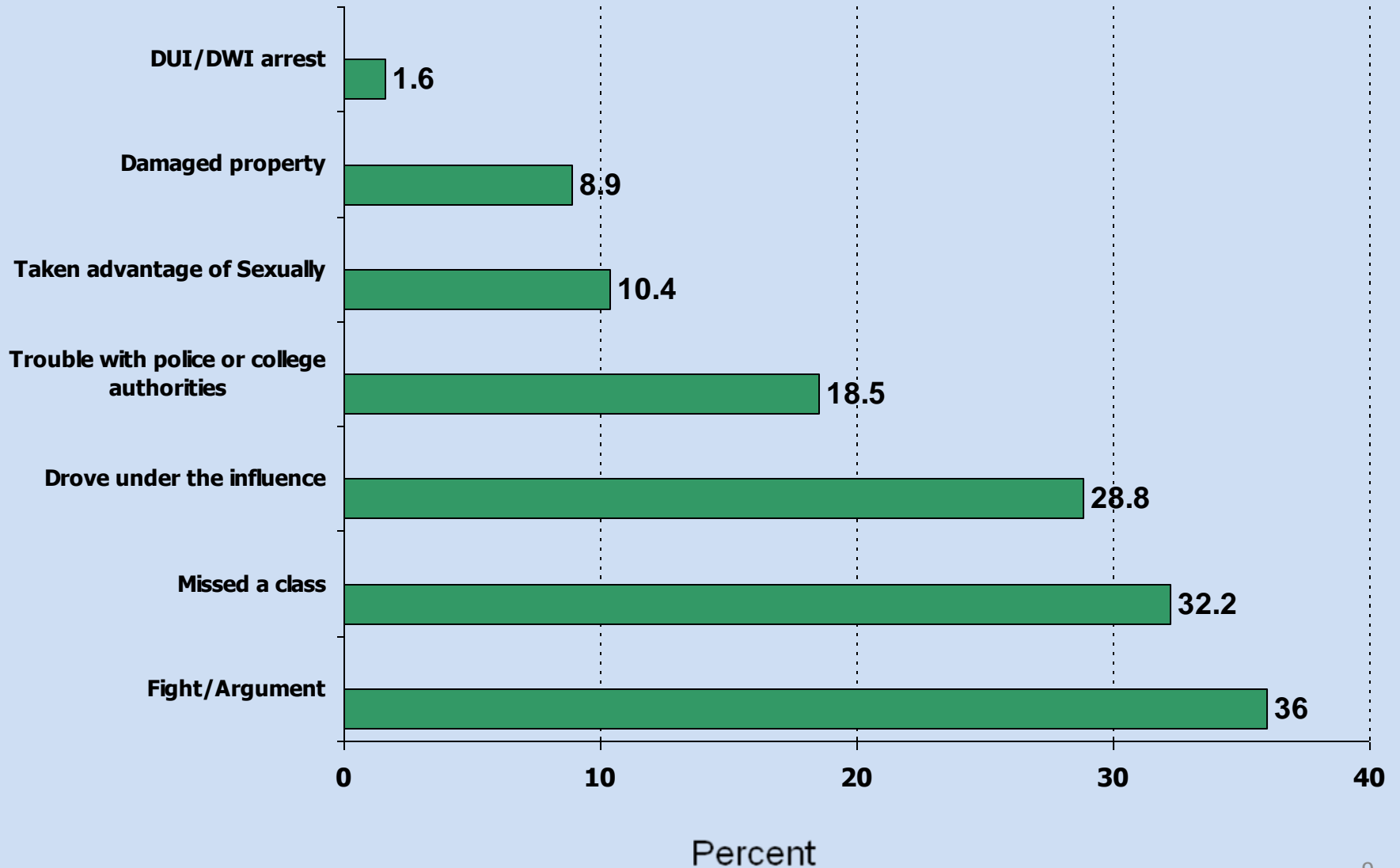
# Past Month Alcohol Use and Past Month Binge Alcohol Use among High School Students: Connecticut, YRBSS, 2007



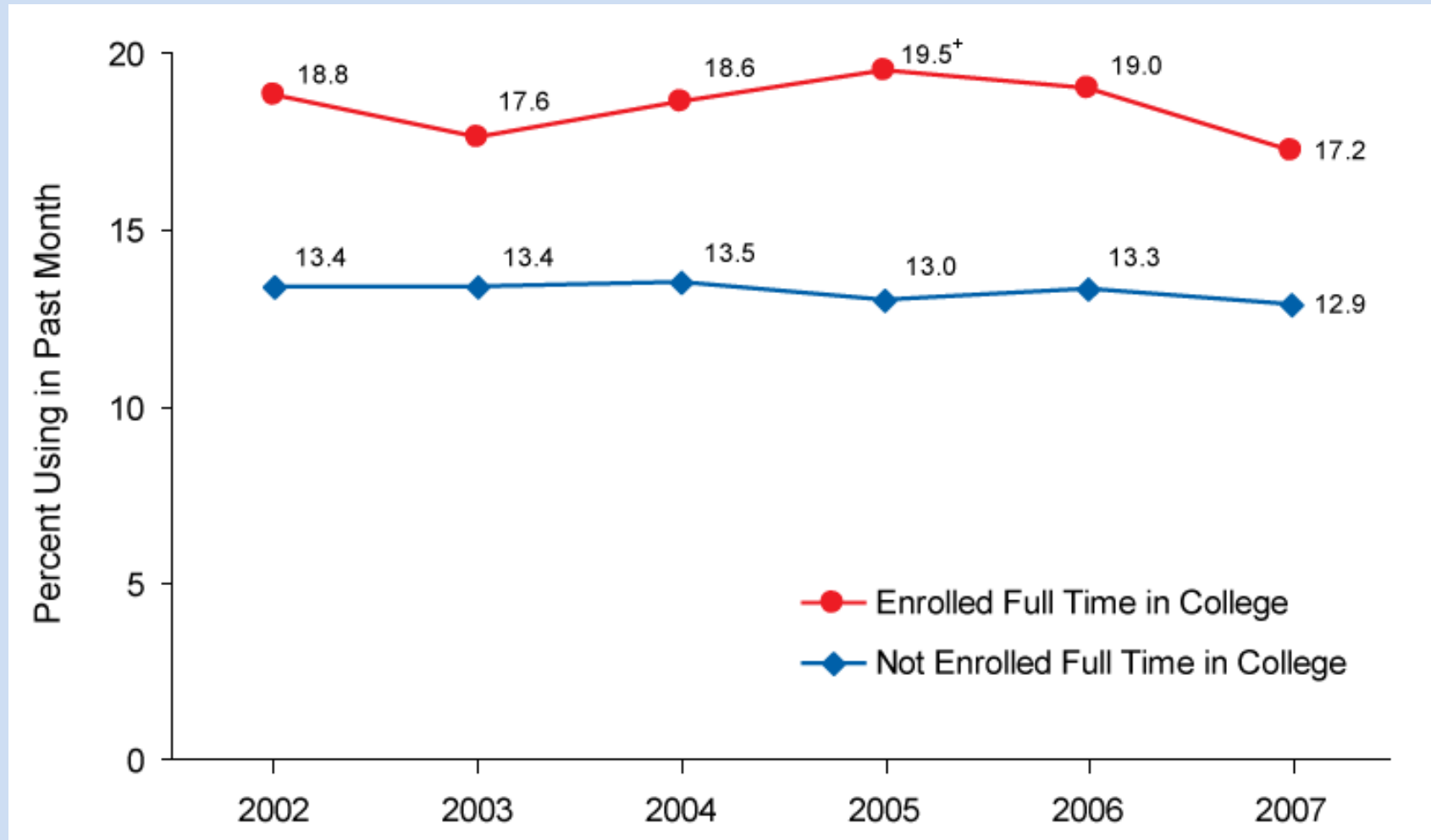
# Trends in Past 30 Day Alcohol Use and Past 2 Week Binge Drinking among Connecticut College Students Ages 18 to 20: Core Survey, 2004, 2006 and 2008



# Alcohol and Drug Use Related Consequences Among University Students in Connecticut: Core Survey, 2006

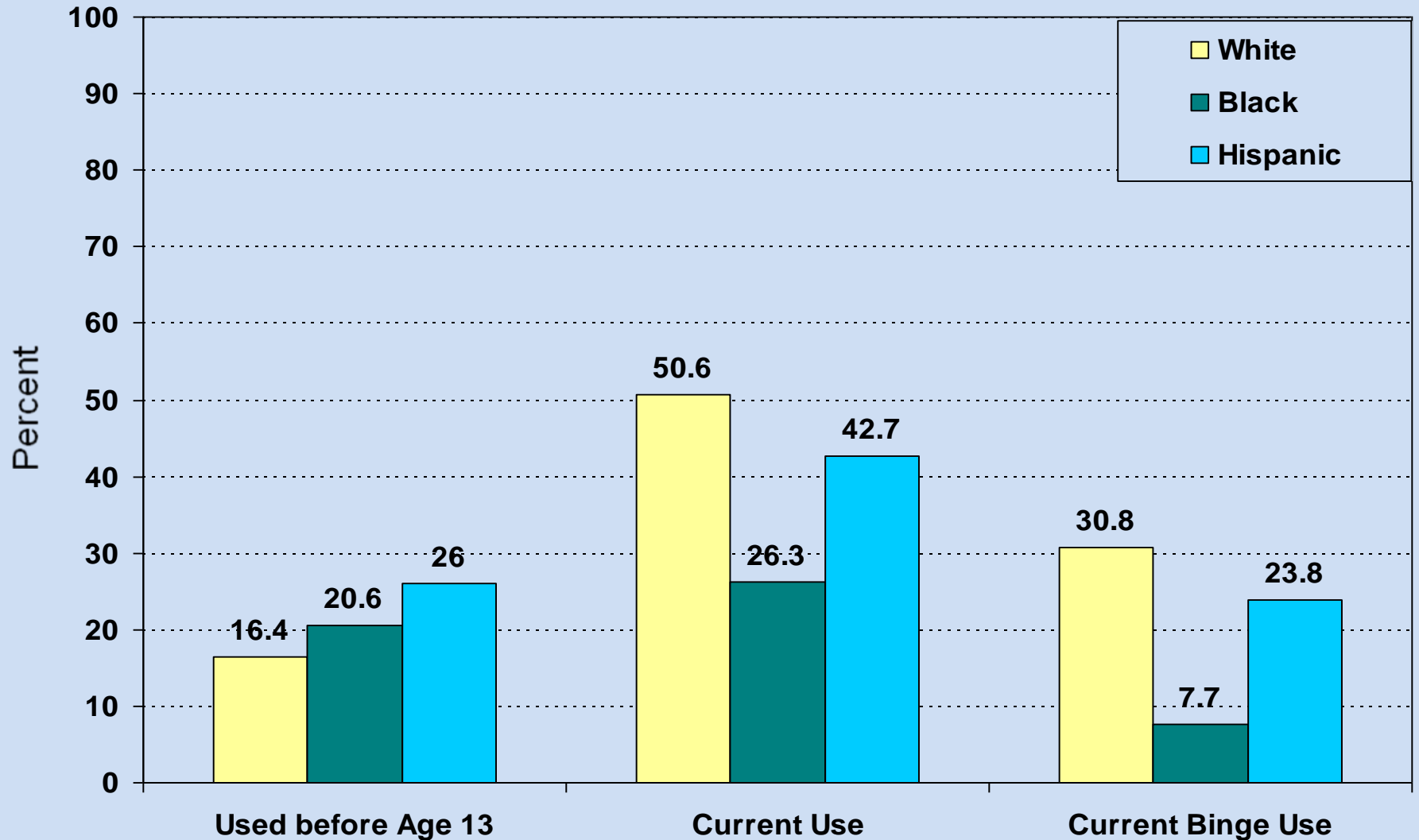


# Heavy Alcohol Use among Ages 18 to 22 by College Enrollment: United States, NSDUH, 2002-2007

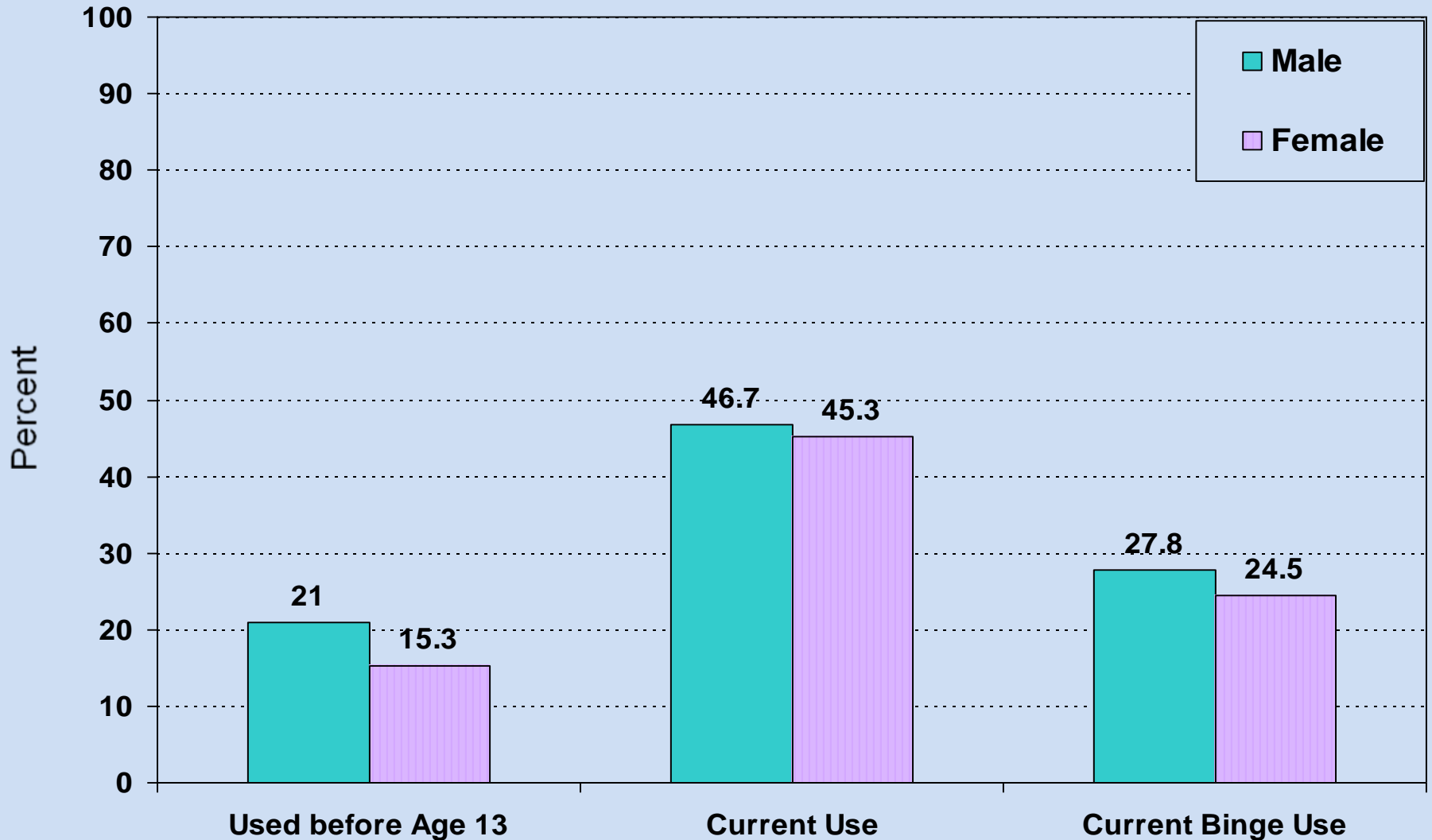


Heavy use - Five or more drinks on the same occasion on at least 5 different days in the past 30 days.

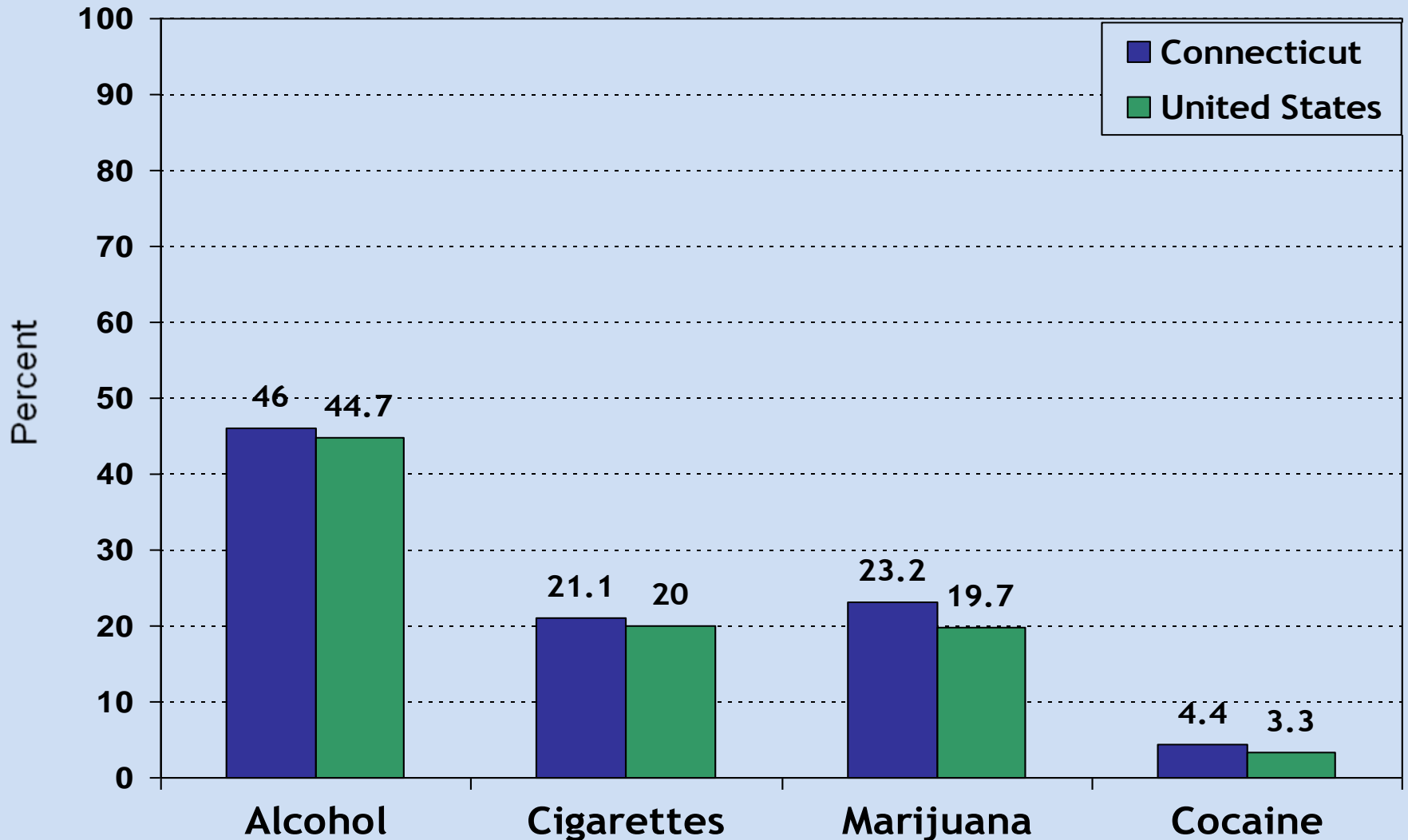
# Racial/Ethnic Differences in Alcohol Use among High School Students: Connecticut, YRBSS, 2007



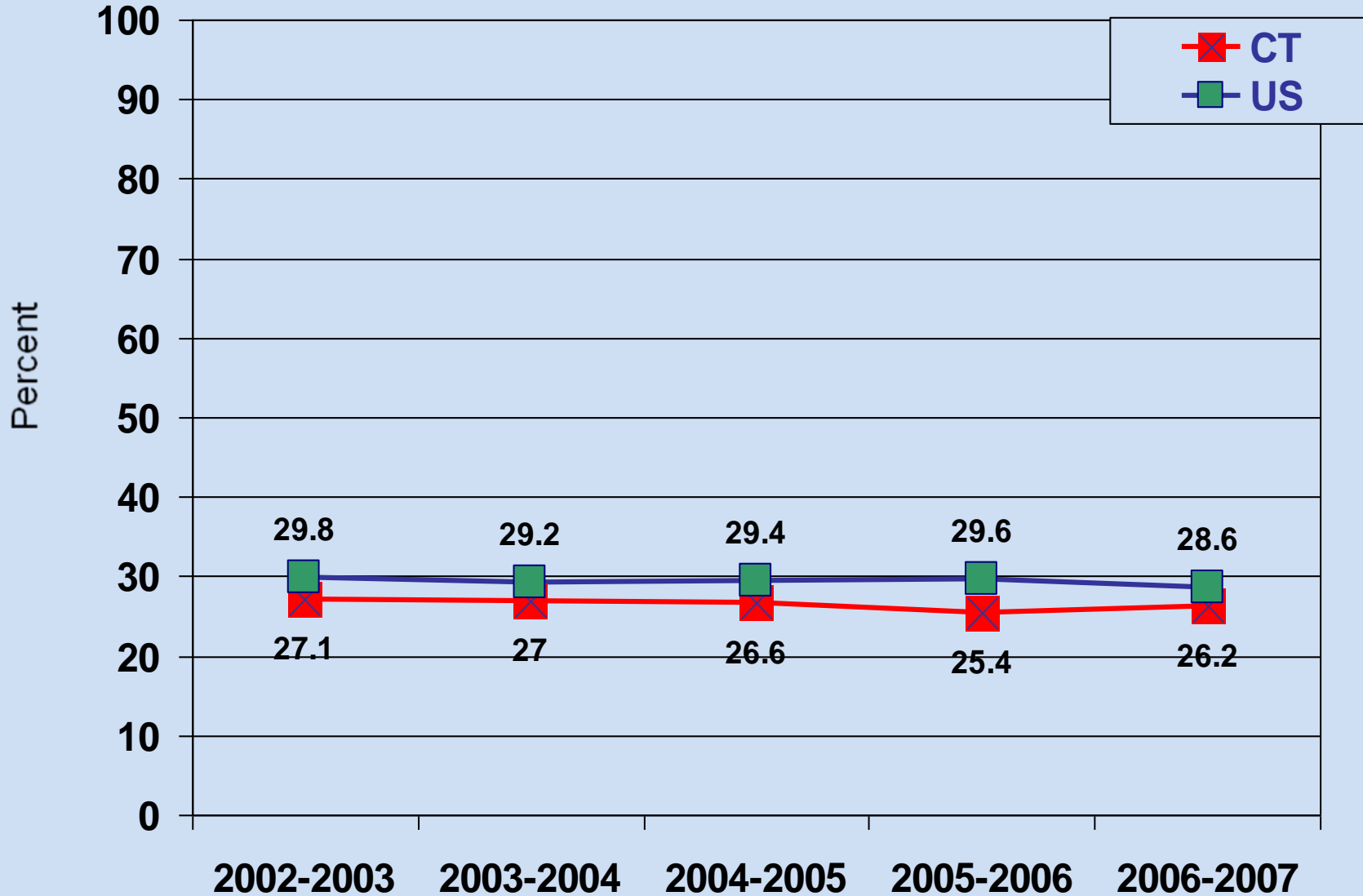
# Gender Differences in Alcohol Use among High School Students: Connecticut, YRBSS, 2007



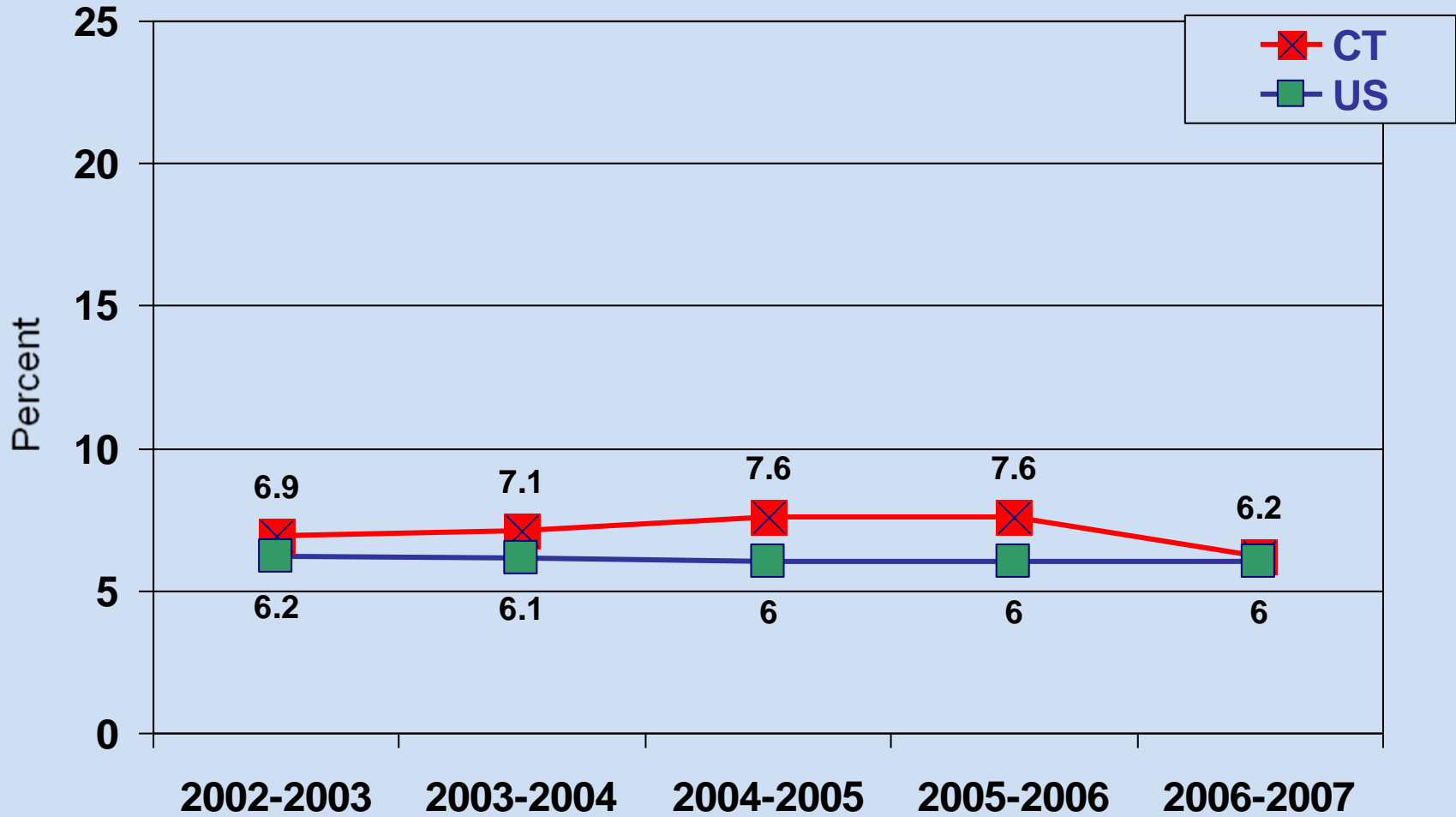
# Percent of High School Students Reporting Alcohol and Other Drug Use in the Past Month: Connecticut vs. U.S., YRBSS, 2007



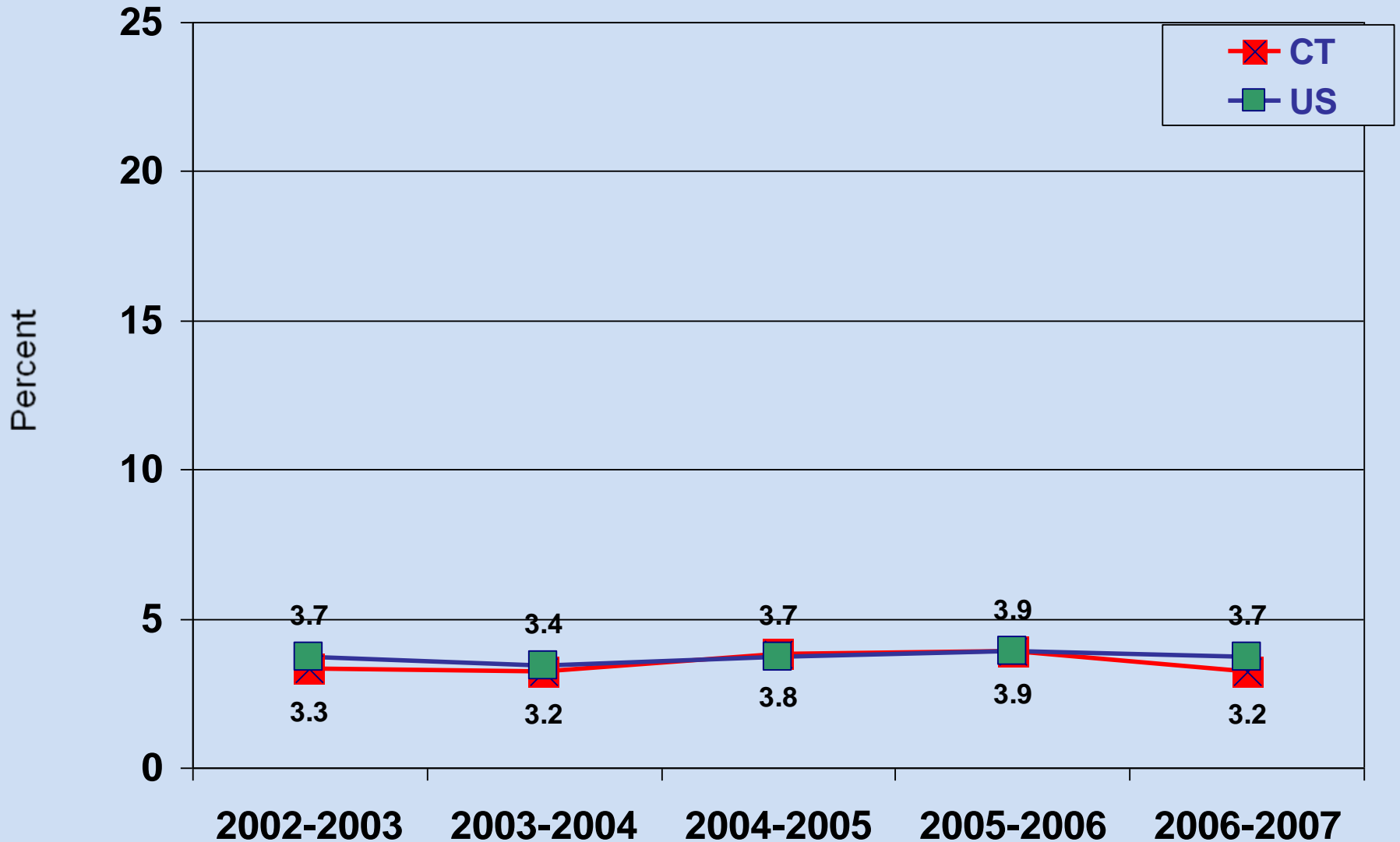
# Trends in Past 30 Day Tobacco Use among Persons 12 or Older: Connecticut vs. U.S., NSDUH, 2002 - 2007



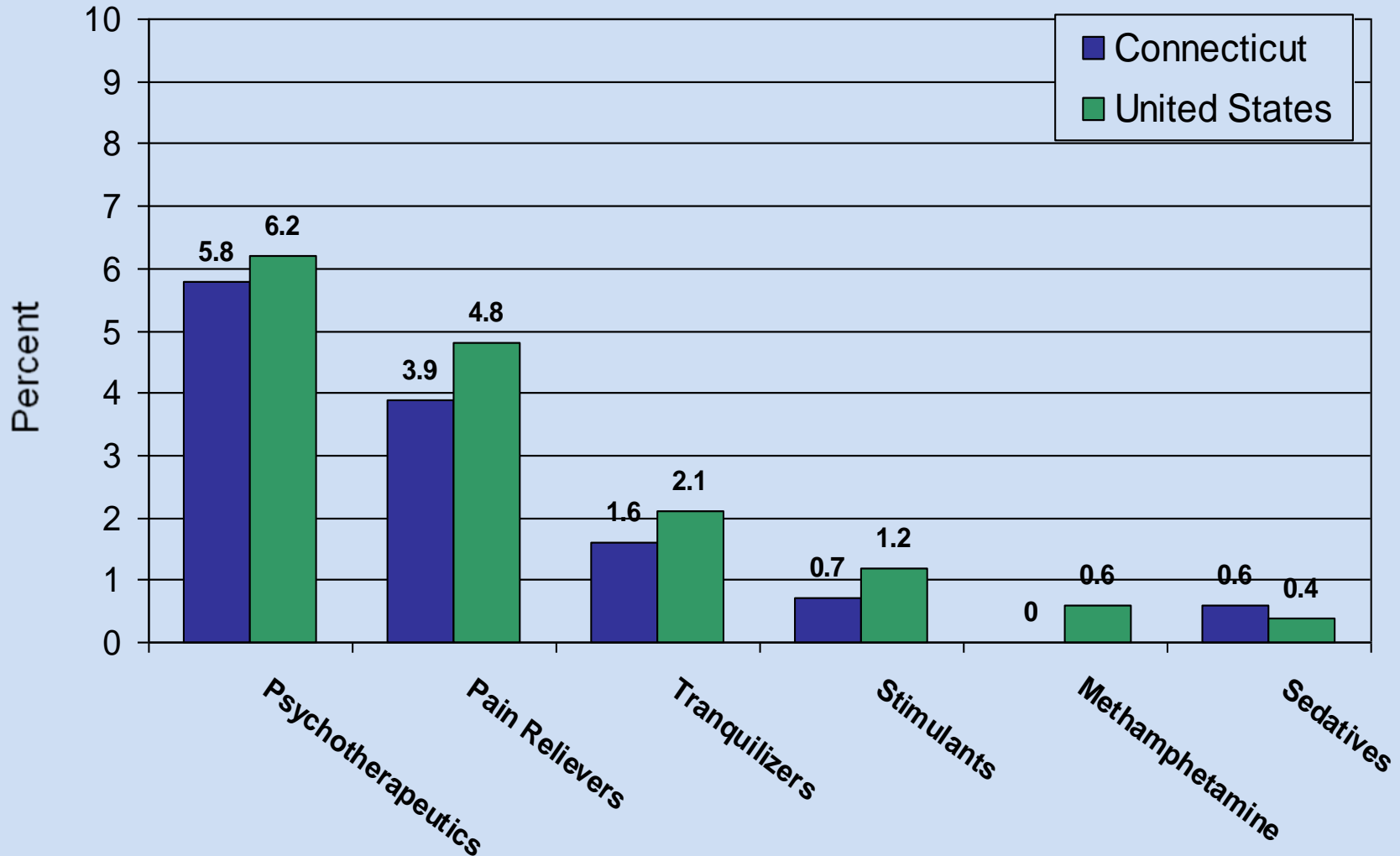
# Trends in Past 30 Day Marijuana Use among Persons 12 or Older: Connecticut vs. U.S., NSDUH, 2002 - 2007



# Trends in Past 30 Day Illicit Drug Use Other than Marijuana among Persons 12 or Older: Connecticut vs. NSDUH, 2002 - 2007

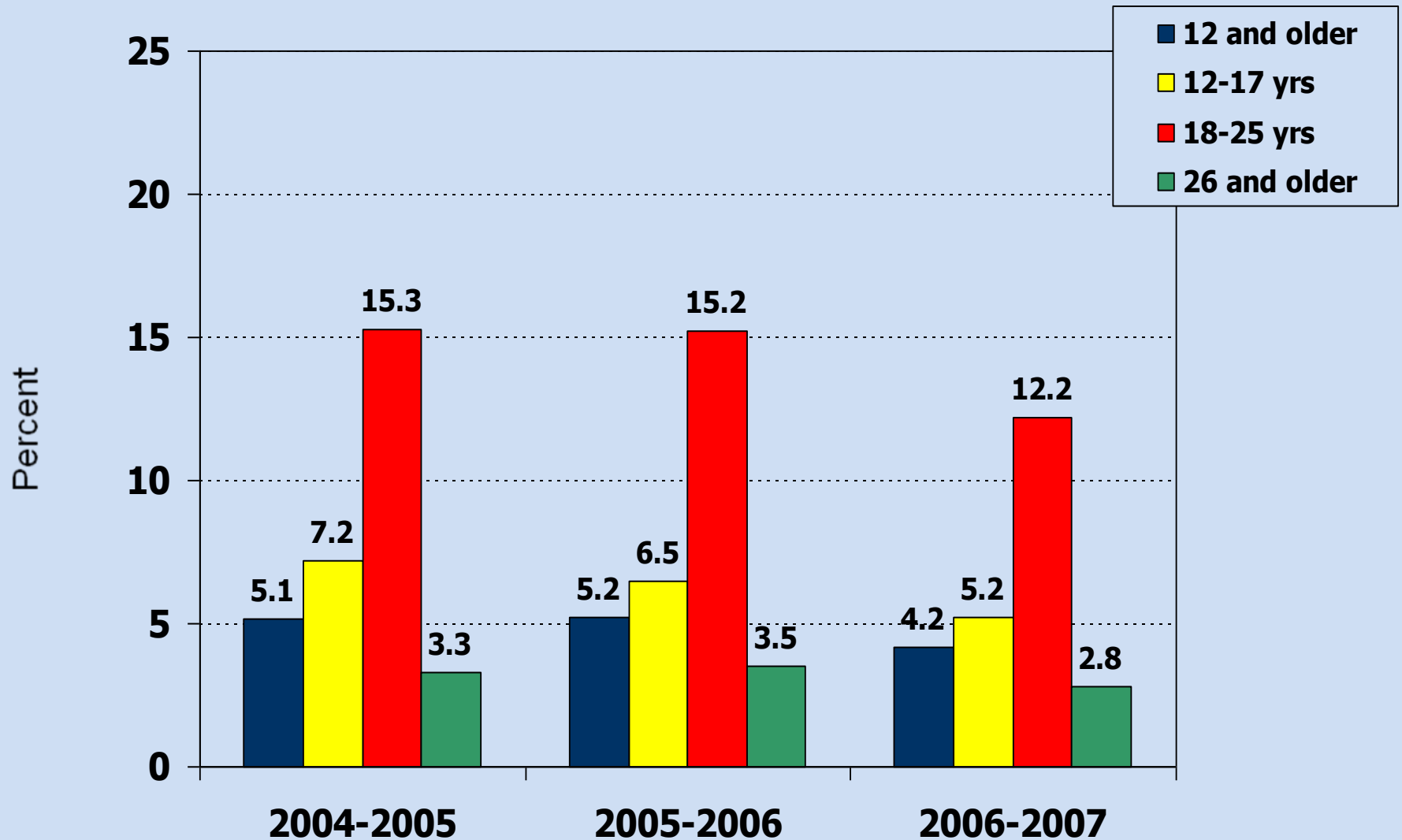


# Average Percentage of Past Year Nonmedical Use of Prescription Medication among Persons 12 or Older: Connecticut vs. U.S., NSDUH, 2002-2004

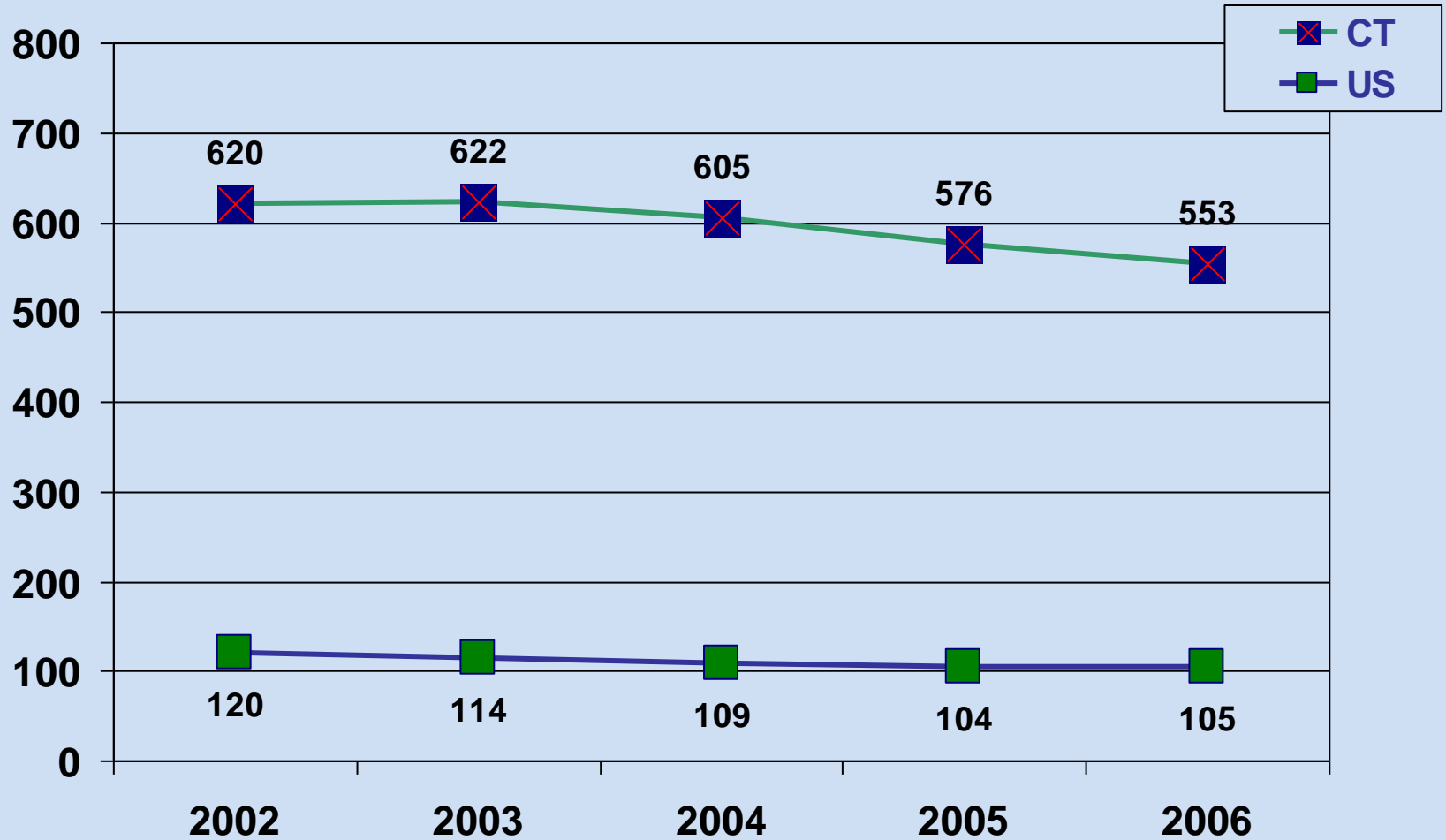


Psychotherapeutics includes the non-medical use of pain relievers, tranquilizers, stimulants or sedatives and does not include over the counter drugs.

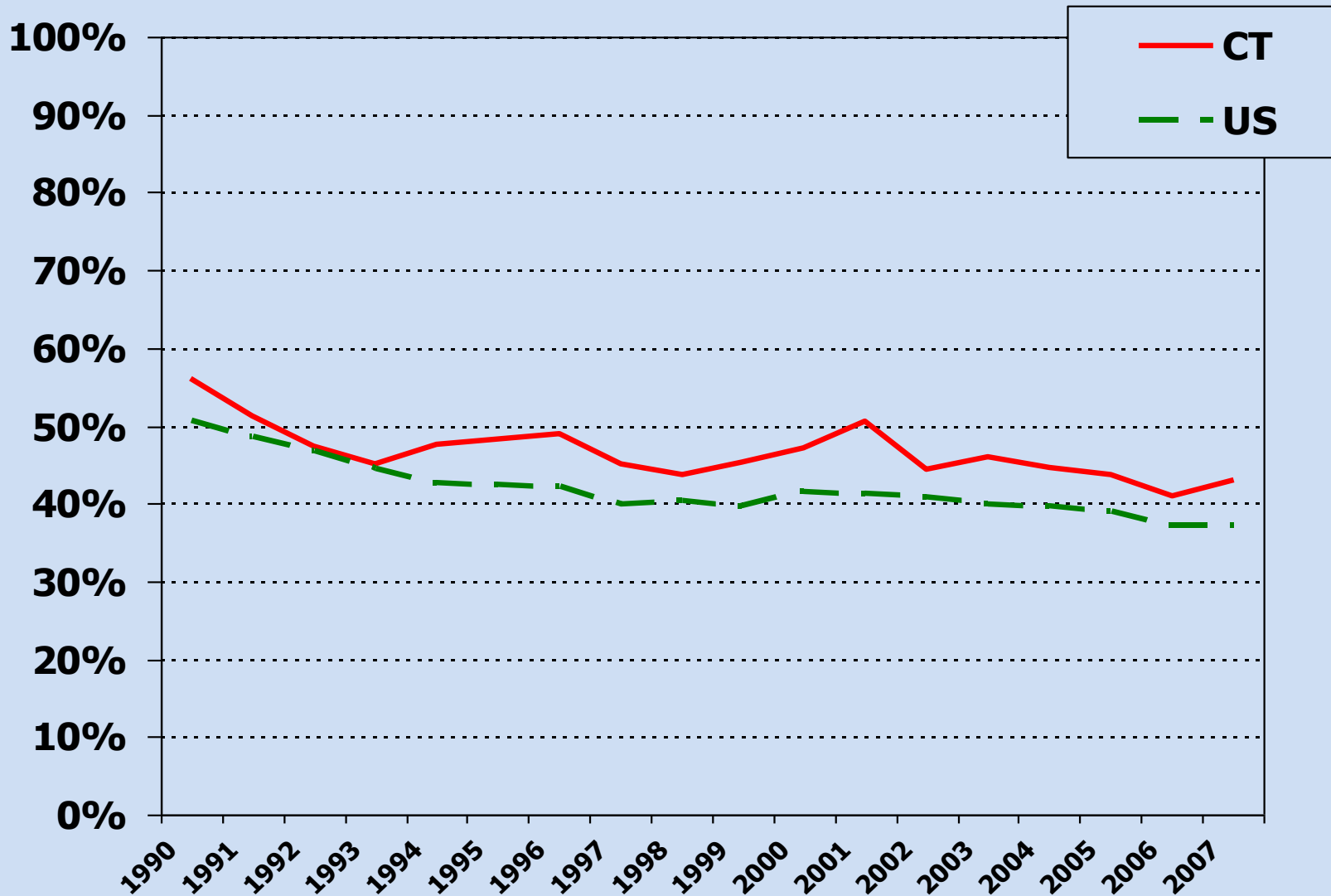
# Nonmedical Use of Pain Relievers in the Past Year by Age: Connecticut, NSDUH, 2004-2007



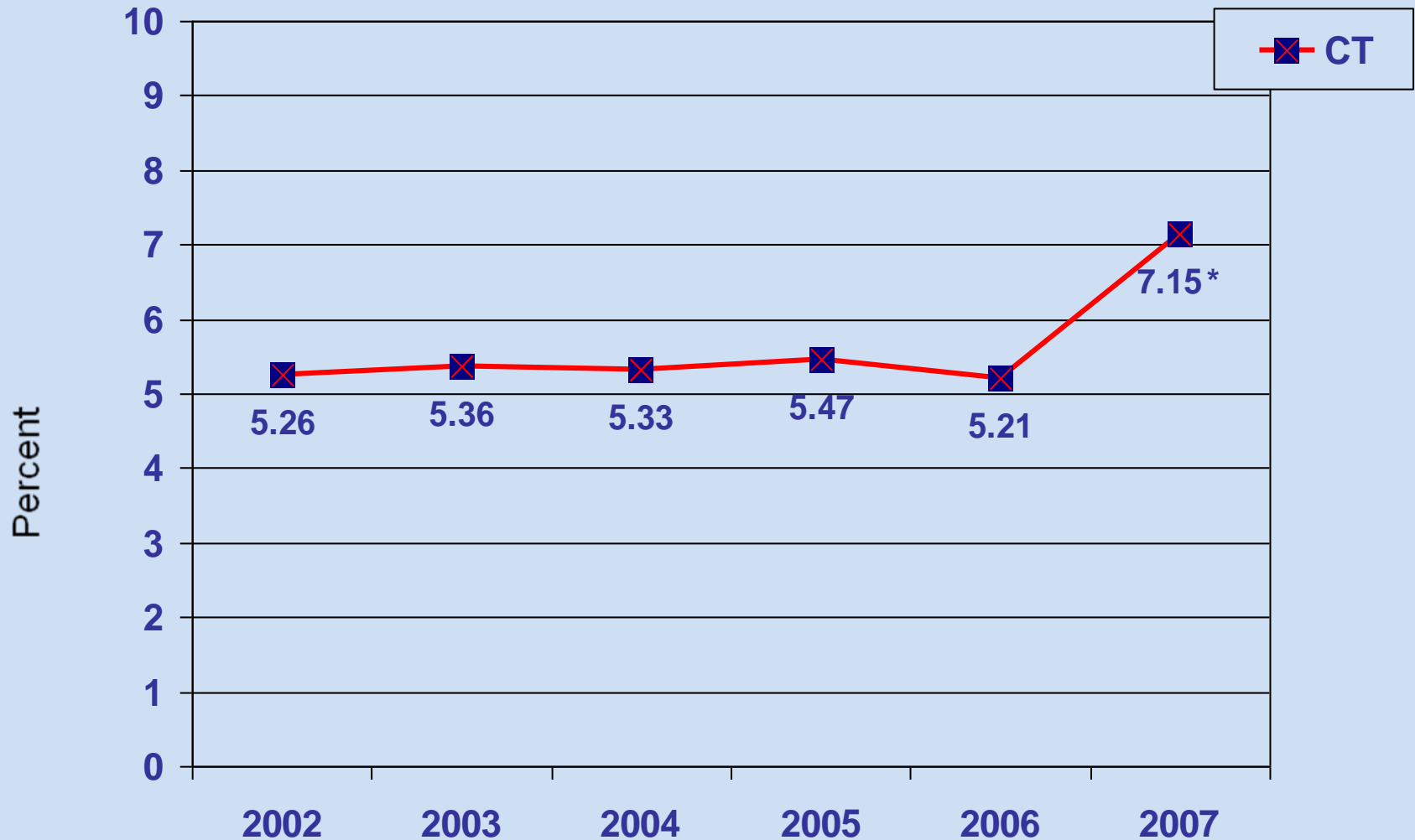
# Heroin Treatment Admission Rate per 100,000 Persons 12 or Older: Connecticut vs. U.S., TEDS, 2002-2006



# Percent of Fatal Motor Vehicle Crashes Involving Alcohol: Connecticut vs. U.S., 1994-2007



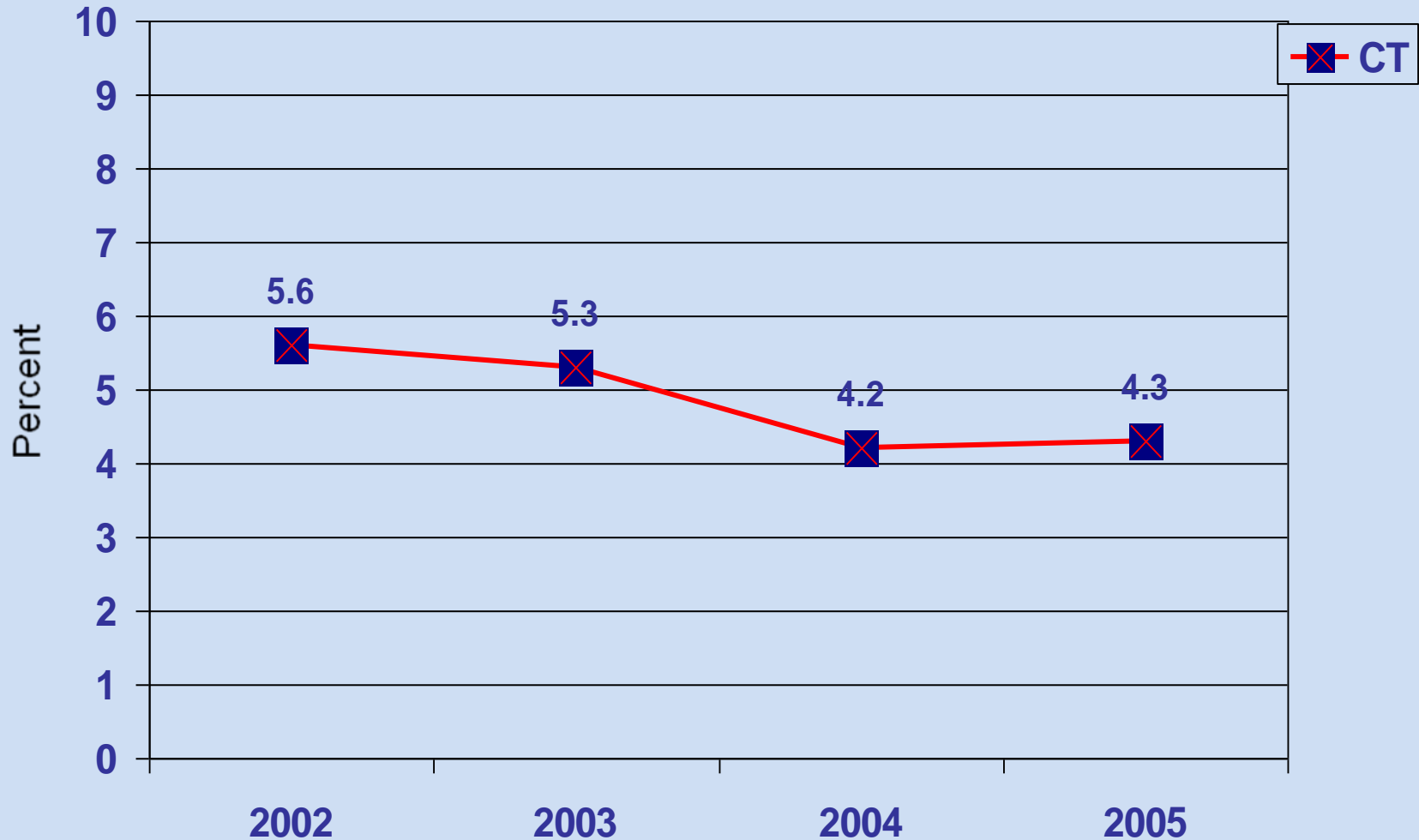
# Trends in Rate per 10,000 Population of Alcohol-Involved Motor Vehicle Accidents: Connecticut, 2002-2007



Source: Connecticut Department of Transportation Accident Data

\*\*"Property Damage Only" accidents which occurred on locally maintained roadways from January 1, 2007 to the present were included in the DOT accident file. "Property Damage Only" accidents which occurred on locally maintained roadways through December 31, 2006 were not coded for inclusion in the accident file.

## Trends in the Rate per 10,000 Population of Juvenile (<18 Years Old) Liquor Law Violations: Connecticut, 2002 - 2005



## Trends in Persons 12 or Older Meeting DSM-IV Criteria for Alcohol Dependence or Abuse: Connecticut vs. U.S., NSDUH, 2002-2007

